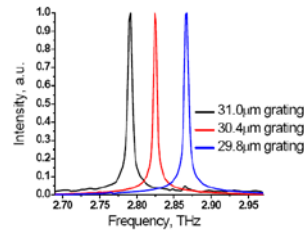
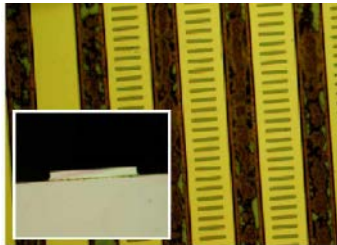


# Research Themes and Overview

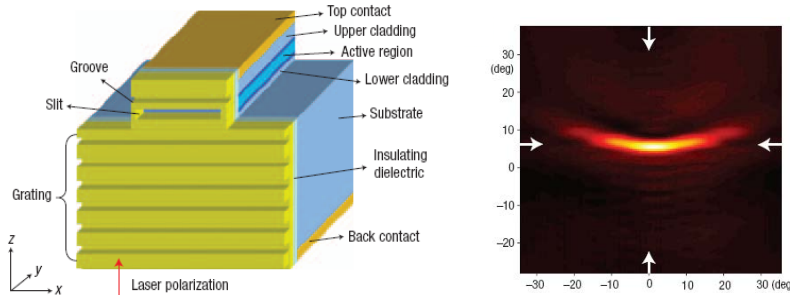
Jonathan Fan, Stanford University

## Novel Nano-optical and Optoelectronic Platforms

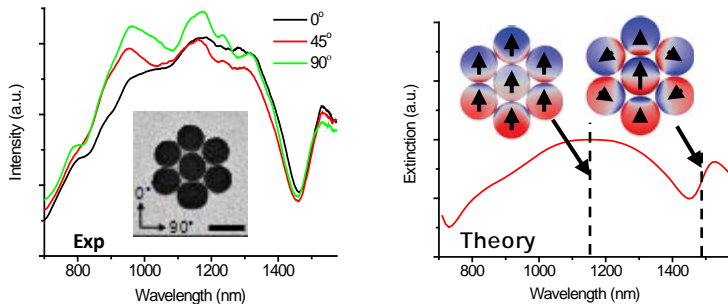
### Surface emitting THz lasers



### Plasmonic collimators

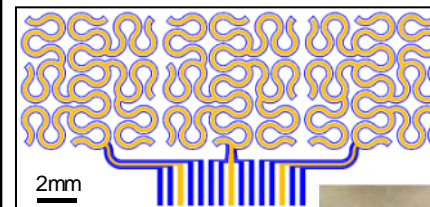


### Self-assembled plasmonics

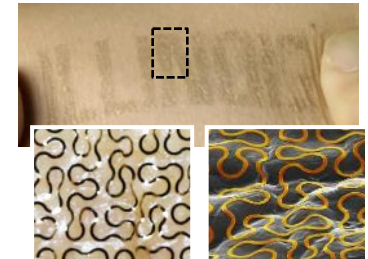


## Biomedical Applications

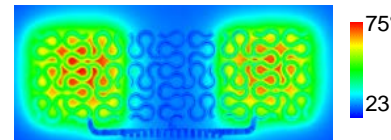
### Fractal-based epidermal electronics



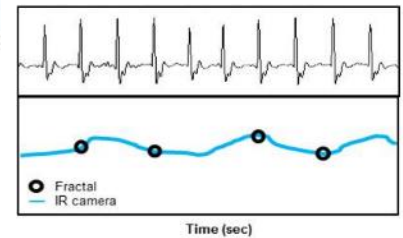
Yellow line: Electrode  
Blue line: Temp. sensor / heater



### Heating



### ECG and temp measurement



### Electromagnetic systems

