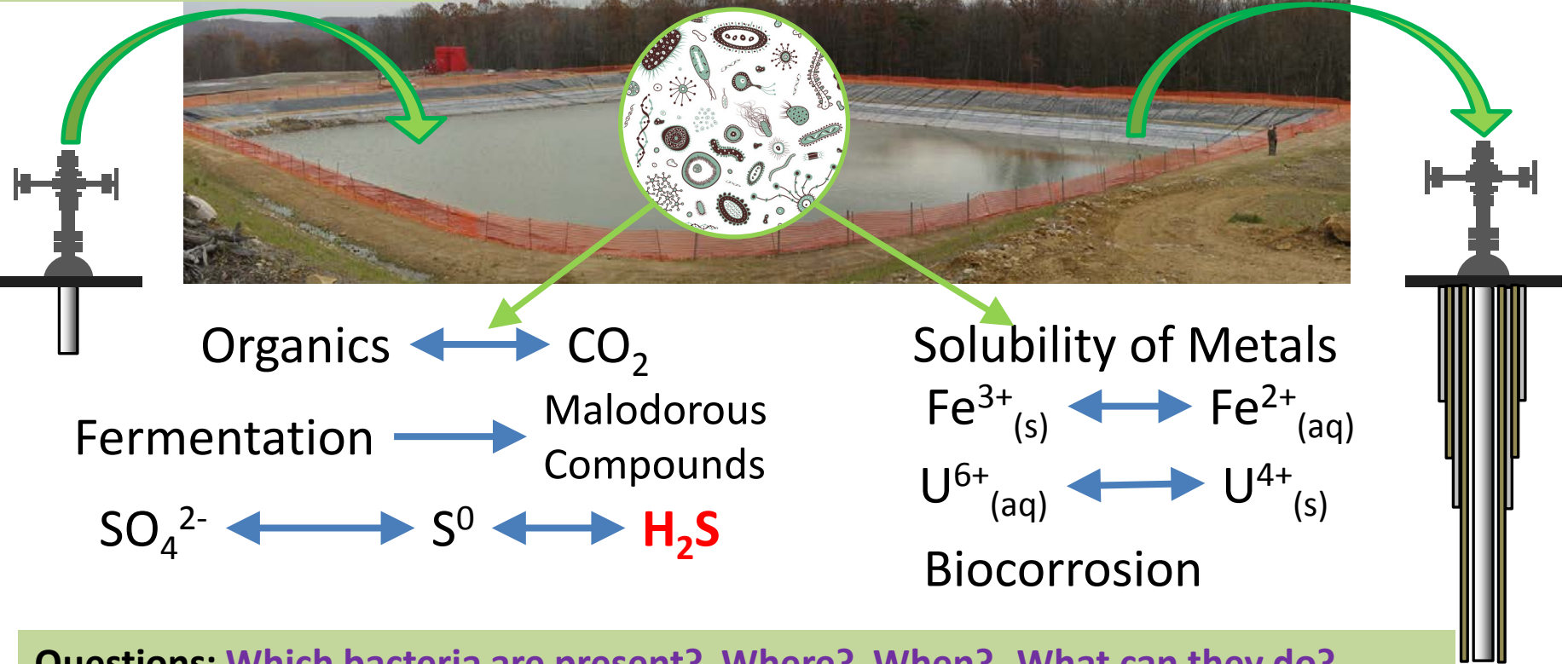


Microbial Ecology and Biogeochemistry of Produced Water

Microbial Community
from Wellhead
Introduced to
Impoundment

Microbial Community
from Impoundment
Introduced to Next Well
During Recycling



Questions: Which bacteria are present? Where? When? What can they do?

Approach: Next Generation Sequencing for 16S rRNA and Metagenomics, ICP-MS