

SMaT
Sustainable Manufacturing Technologies
Laboratory

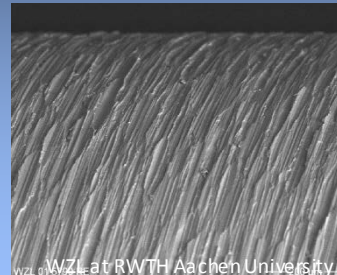
Promoting sustainable manufacturing



Abrasive
machining



Part surface
and properties



WZL at RWTH Aachen University

Product life
cycle and
performance



Sustainability
indicators

Indicator	Unit	Value	Target
Material Efficiency	%	85	90
Energy Consumption	kWh	120	100
CO2 Emissions	kg	150	120
Waste Generation	kg	200	150
Product Quality	%	98	95
Customer Satisfaction	Score	4.5	4.0
Employee Safety	Incidents	0	0
Community Impact	Score	3.8	3.5