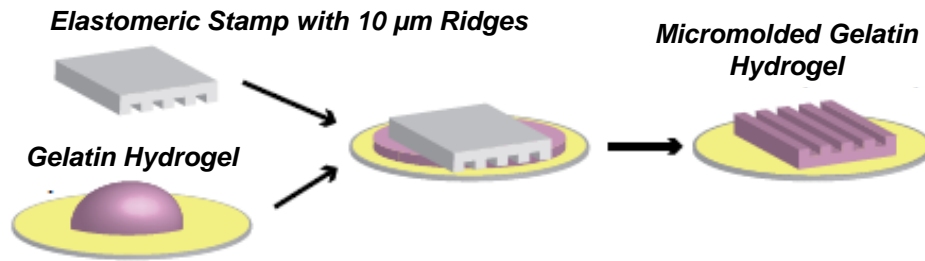


# Megan L. McCain, PhD

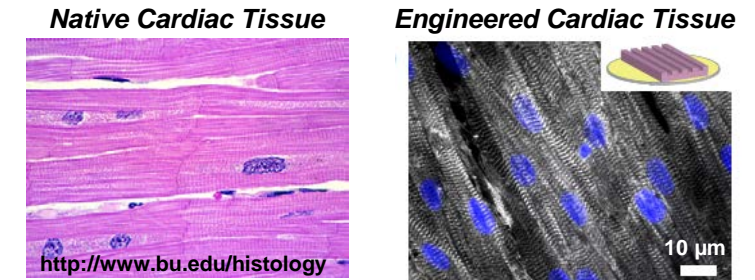
Assistant Professor of Biomedical Engineering and  
Stem Cell Biology and Regenerative Medicine  
University of Southern California, Los Angeles, CA



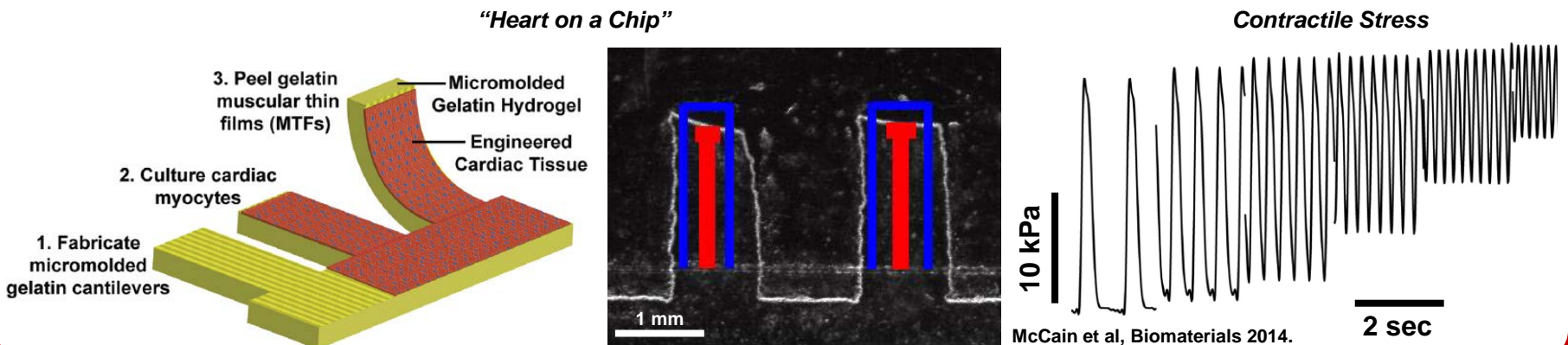
## Develop biomimetic materials as scaffolds for engineering cells & tissues



## Culture heart muscle cells from rodents or human stem cells



## Develop “Organ on Chip” platforms to quantify function of engineered tissues



Our biomimetic “Organ on Chip” platforms can be used to (1) study and understand human development and disease, (2) identify therapeutic targets, and (3) test drugs