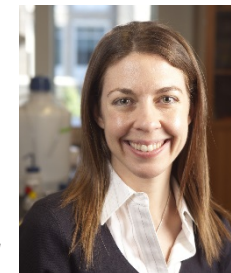
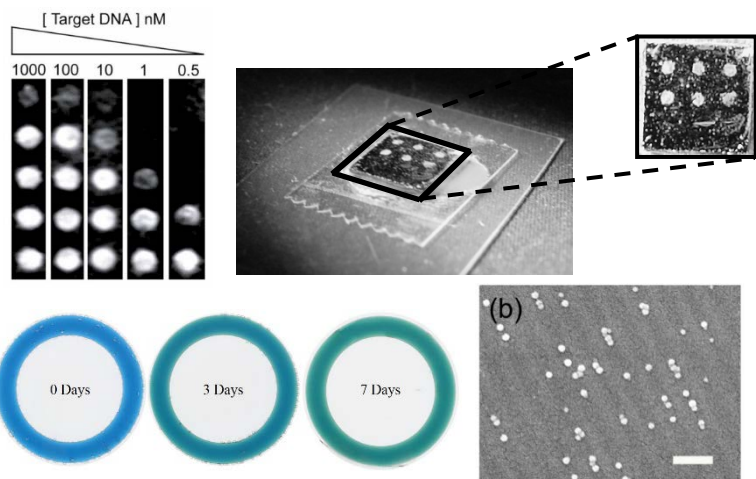


Overarching research thrust involves developing polymeric systems for sensing and controlled delivery technologies through a translational approach

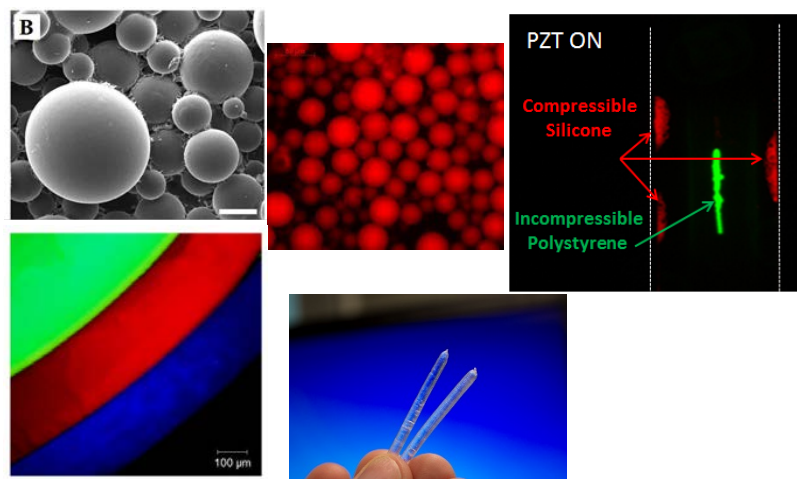
Dr. Leah M. Johnson
leahjohnson@rti.org



Diagnostics & Biosensing Systems



Controlled Delivery & Biomolecular Transport



Translational Research Approach



Scope of Projects

- Translate biomolecular recognition events into visual macroscopic responses for assessment of biomolecules and biomedical device adherence

Scope of Projects

- Controlled delivery approaches for pharmaceutical agents and components for enhanced oil recovery

Scope of Approach

- Research leverages collaborations from academic and industrial sectors to translate technologies from bench to field ready capacities