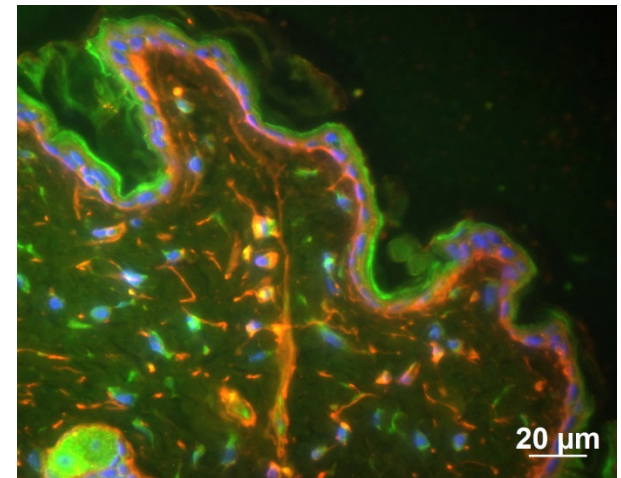
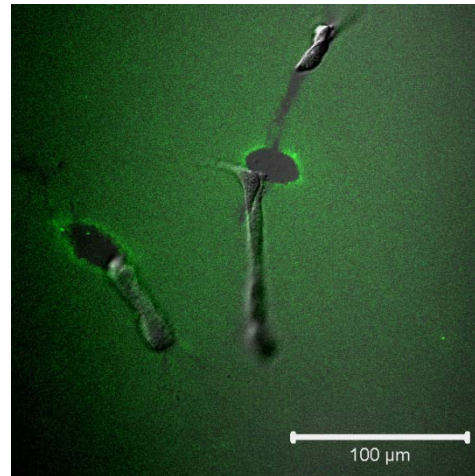
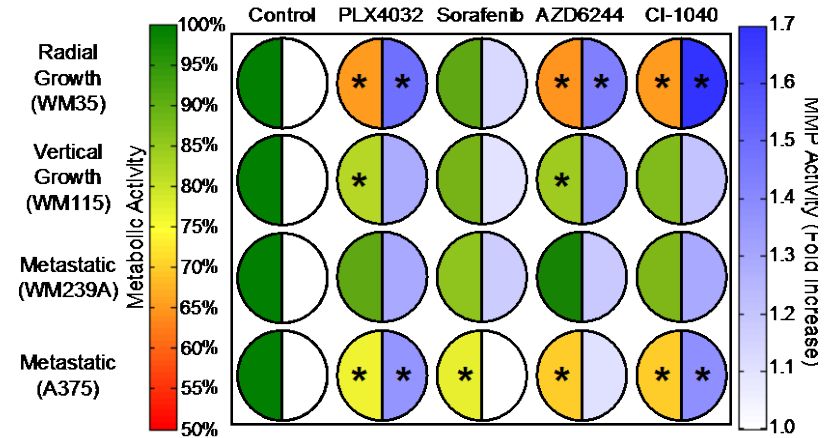
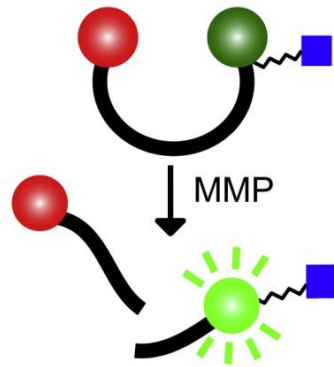


Engineering the cellular microenvironment to investigate cancer

Jennifer Leight, Department of Biomedical Engineering

- ❖ Develop fluorescent peptide sensors to measure cell function
- ❖ Use synthetic hydrogels to probe how the microenvironment regulates cell function



THE OHIO STATE
UNIVERSITY

leightlab.engineering.osu.edu