



Prof. Corinne E. Packard–

Dept. of Metallurgical & Materials Engineering, Colorado School of Mines

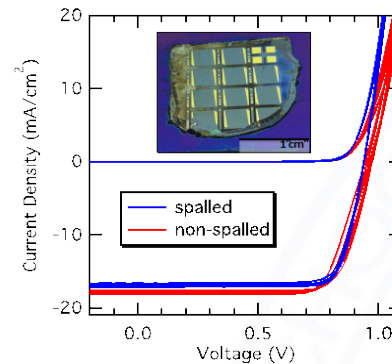
Fundamental and Applied Mechanical Behavior of Ceramics

Examples:

- Intentionally fracturing semiconductors to reduce the cost of photovoltaics
- Failure in lithium ion batteries due to fracture of cathode material
- Designing transparent conducting oxides for durability
- Understanding pressure induced transformation for designing oxide coatings in ceramic matrix composites

Funding: NSF CAREER, DOE, ARPA-E, NREL

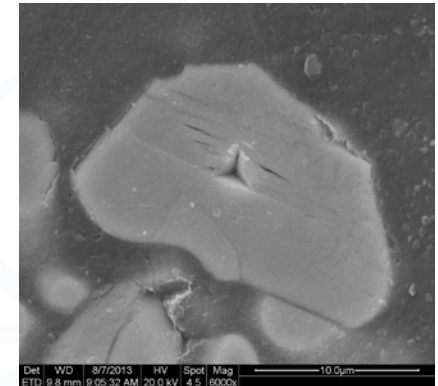
18% solar cell fractured off substrate



transparent electrodes for flexible electronics



strange fracture patterns in aged Li battery material



high-pressure fundamental studies

