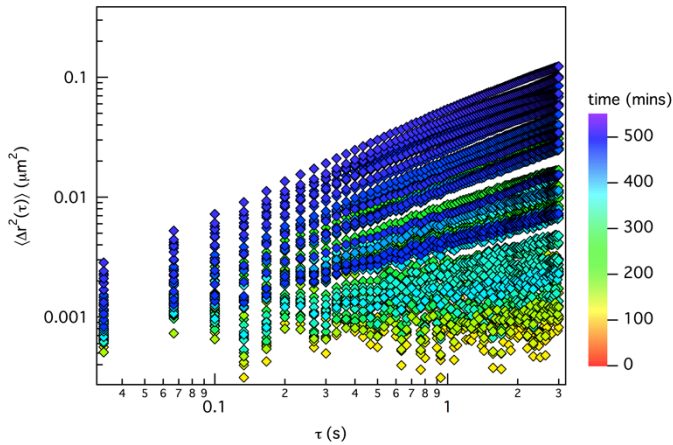
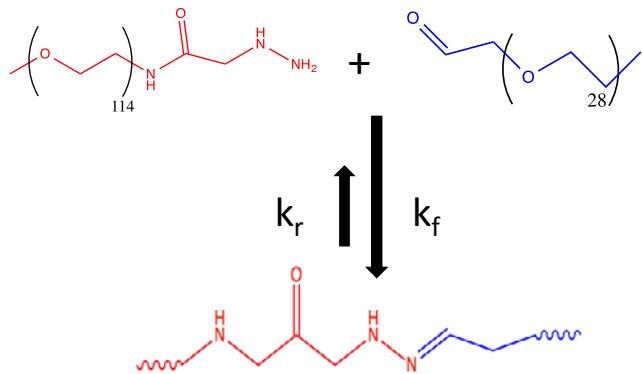
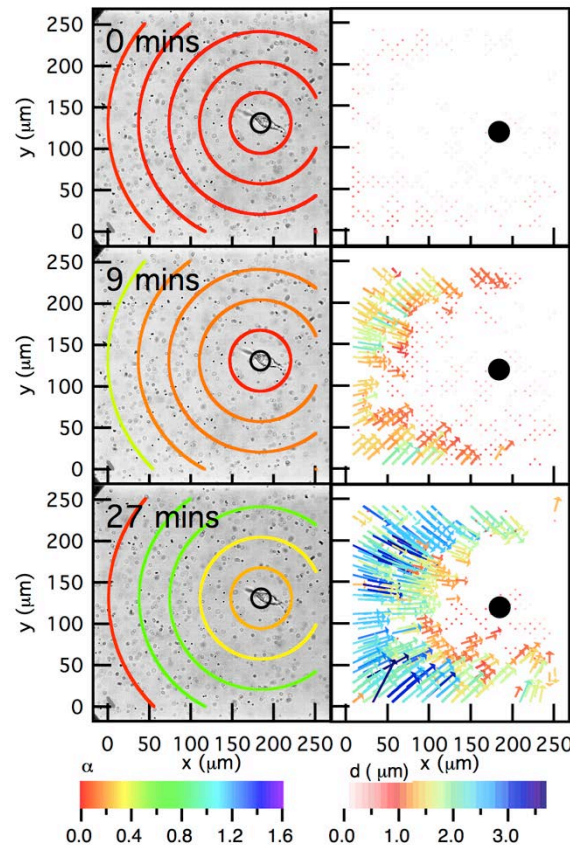
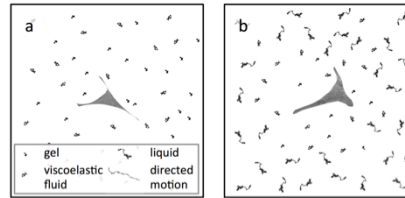


# The Schultz group develops real-time characterization techniques to understand dynamic microenvironments in emerging biocompatible hydrogel scaffolds

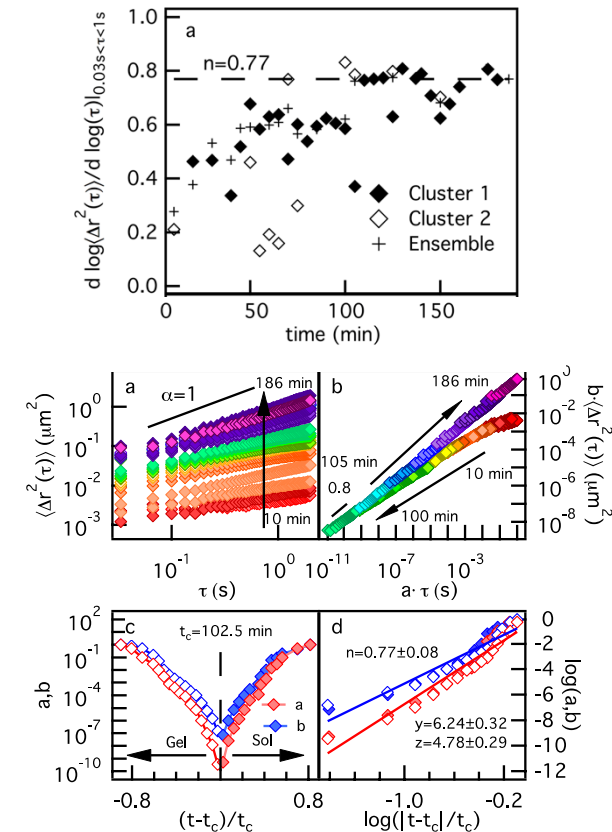
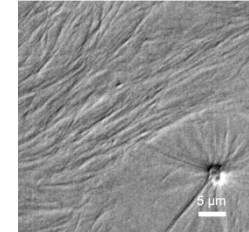
## Covalently adaptable hydrogel scaffolds



## Cell-material interaction



## Hydrogenated castor oil



Schultz and Anseth, *Soft Matter*, **9**, 1570, 2013.

McKinnon et al., *Adv. Mater.*, **26**, 865, 2014.

McKinnon and Anseth, *Chem Mater*, **26**, 2382, 2014.

Schultz, Kyburz and Anseth, *PNAS*, **112**, E3757, 2015

Wehrman, Lindberg and Schultz, *Soft Matter*, **12**, 6463, 2016.