

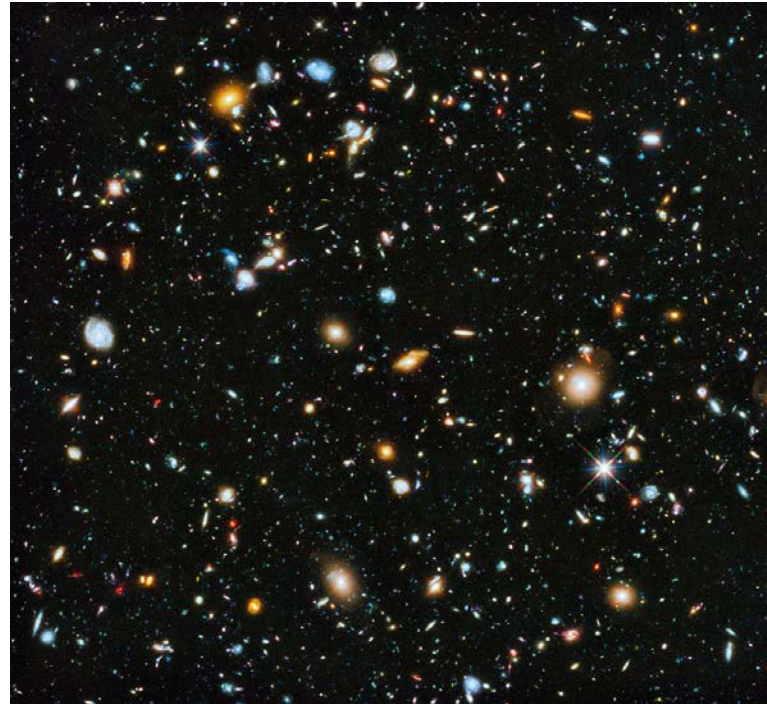
## Create the computational microbial universe: Uncovering dependencies, driving experiments, predicting behaviors



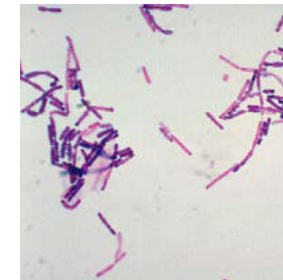
*Salmonella enterica*



*Escherichia coli*



*Pseudomonas aeruginosa*



*Bacillus subtilis*

- ✓ Large **data integration**
- ✓ Scalable, predictive **models**
- ✓ Optimal design **algorithms**

